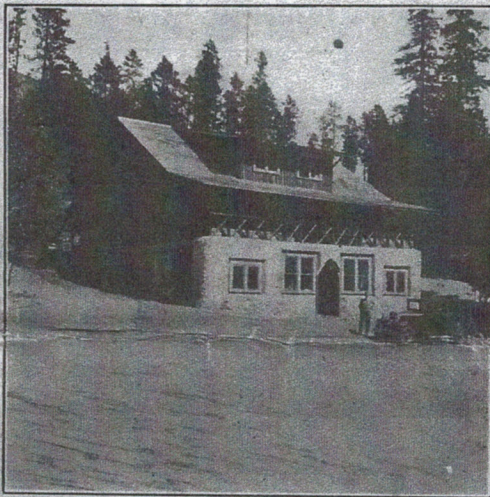


STUIE LODGE

Bella Coola, British Columbia
In the Heart of the Mackenzie Park



Stuie Lodge

**BIG GAME HUNTING — FISHING
SUMMER VACATIONS**

"A Sportsman's Paradise"

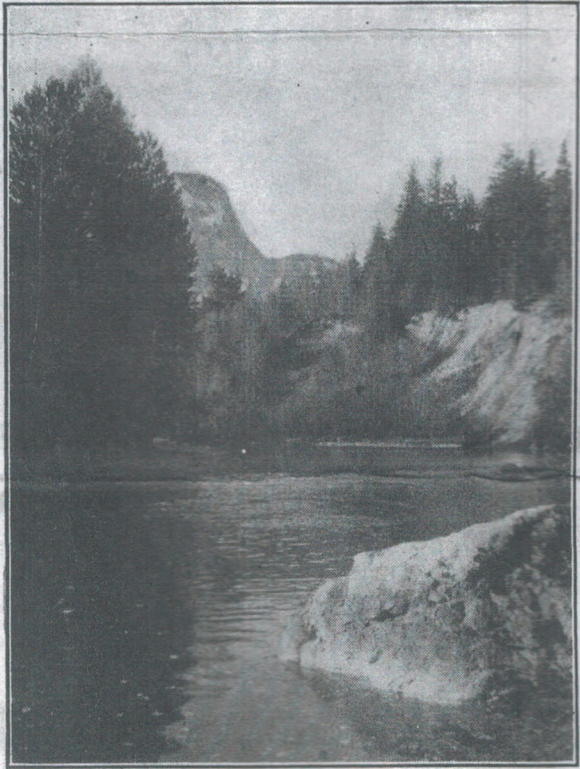


In a virgin country and amidst magnificent mountain scenery nestles Stuie Lodge. In this wilderness of romance, through which Sir Alexander Mackenzie passed in 1793, after his long, adventurous journey across Canada, one can follow the old Indian trails and recall the poetry and stories of the North land.

ABILITY?

Dr. Harlan Smith of Ottawa, writes as follows:

"In the (Mackenzie) Park are thousands of waterfalls, some of them large. One near the Eastern edge of the park is said by reliable frontiers men to make a clear leap of over 828 feet. If this be true, it is the fifth highest known fall in the world, second highest in the Western hemisphere, and the highest in Canada. Surely the opportunity to first measure this fall should appeal to many university students and men of leisure."



"The Atnarko River at Stuie"

And again: "There is also the romance of the trappers and prospectors that has not yet been adequately told. The cowboy life that drifts down from the interior and may usually be seen in evidence at Bella Coola, and Indian horsemen and horsewomen are perhaps less modernized than anywhere else in Canada."

And finally: "Here one may live in comfort among a picturesque and primitive pioneering people, with unequalled scenery of mountains, glaciers and virgin forests at his very door. The person who longs for a complete change and yet hesitates to break connection with his business, may enjoy all the wilderness that his heart calls for and yet be within telegraphic communication with the world of affairs."



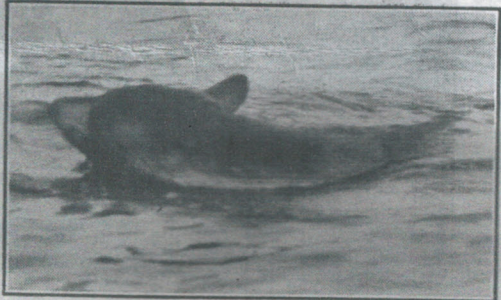
"A Day's Catch"

FISHING

THE ATNARKO, a clear mountain river with fast riffles and deep, still pools offers unequalled sport to the fisherman. Harboring a wide variety of fish—Rainbow and Steelhead up to 15 lbs. and averaging 5 to 7 lbs., Cut-throat and Dolly Varden. The season extends from early July to late Fall. There are opportunities for anglers to cast their flies over waters never fished before. Previously there has been no accommodation for fishermen on the North West coast of British Columbia, and they are now given an opportunity to experience the marvellous sport which our coastal rivers offer.

HUNTING

THE MACKENZIE district of British Columbia, which includes the Bella Coola valley is renowned as one of the finest hunting grounds for Grizzly Bear. During the Fall the bear fish up the rivers, gathering a rich harvest from the spawning Salmon. Therefore it is possible for a party to stay at the Lodge, hunt Grizzly during the day and return



"Black Bear Swimming"

to a hot bath and comfortable bed in the evening. During the late Fall, the bear generally moves further up stream, and, in order to obtain good trophies, a short trip with horses might be necessary. Good bear hunting can also be obtained during the spring. Black and Brown Bears are also numerous.



"A Satisfied Guide"

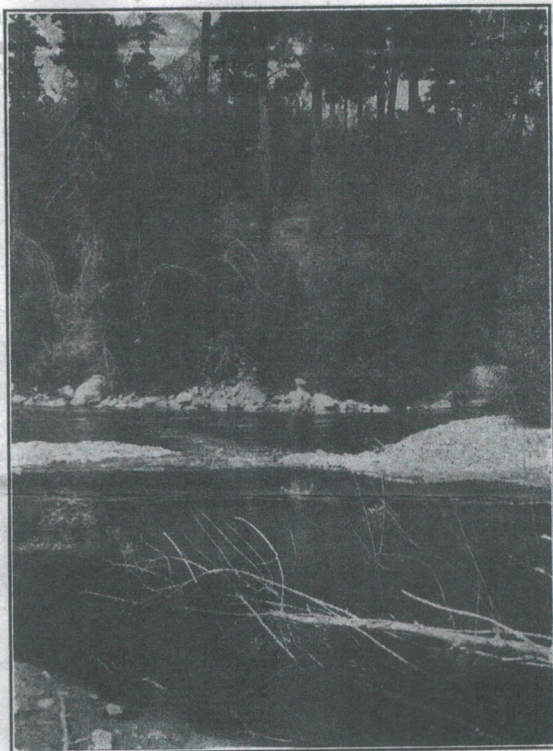
Moose are plentiful on the upper country behind Stuie, and within 50 miles of the Lodge. There are good trails and we are prepared to make all necessary



"Goat Swimming in Lake in Mackenzie District"

arrangements for guides, horses and equipment. Goat, Mule Deer, and Coast Deer can also be obtained.

Grouse and Ducks are plentiful, and during the Fall a little wing shooting can be combined with fishing, making a very enjoyable vacation. There are vast stretches of country where game has hardly heard a shot fired, practically unexplored country and a sportsman's paradise in every sense of the word.



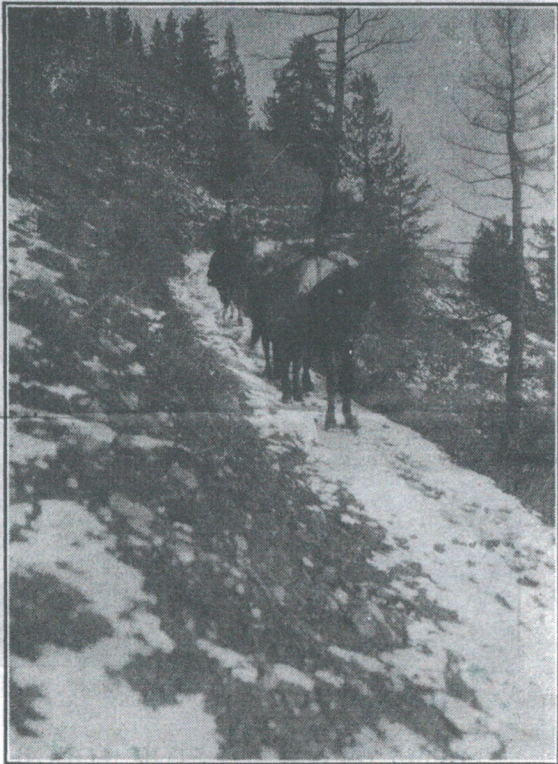
"Fishing near Stuie Lodge"

HOW TO GET TO STUIE LODGE

THE UNION Steamship Co's comfortable boats leave Vancouver every Tuesday evening at 8.00 p.m. No one should miss the marvellous cruise up the inland waterways of the British Columbia Coast. Fare, including meals and berth, \$20.00 one way. The boats arrive and sail from Bella Coola on Thursdays. A most courteous service is given by the Union Steamships, who take pride in making your voyage a pleasant and happy one. We meet all boats with modern sedan cars, and the scenic drive of 42 miles up the Mackenzie Highway will never be forgotten, it being most interesting to note the change of scenery and climate as the traveller progresses inland.

A PERFECT REST-CURE

STUIE—site of an old Indian village 42 miles inland from Bella Cooola—lies between the coast range and the interior plateau of British Columbia. Therefore it is blessed with an ideal climate, dry and invigorating warm days, and cool nights, and makes a wonderful vacation for anyone needing peace and rest after the turmoil of a city life. Sleepless nights are unknown, and it is impossible to worry while staying at Stuië.



"Returning from the Hunt"

HIKING, RIDING, ETC.

THERE ARE fine opportunities for hiking, and every turn in the trail provides a fresh picture for artist or photographer. The small mountain creeks are literally full of little brook trout, and no meal can compare to fresh trout fried over a camp fire beside a rushing mountain torrent. One of the trails from Stuië takes you forty-five miles to the heart of a big, open range country, lying between the Chilcotin and the Coast, where one may see the last stand of the Great West.

THE LODGE

THE EXTERIOR of the Lodge is rustically built of Jack Pine and rocks, and, although situated in the woods, it is fully equipped with bathroom, hot and cold running water, well furnished bedrooms, and comfortable lounges where dancing may be enjoyed. There is a large verandah, well shaded



"Grizzly"

and beautifully cool. After dinner, guests can stroll down to the banks of the Atnarko—a graceful mountain river—and watch the sun set behind peaks as yet unconquered by man or woman, the silence of the evening broken only by the trout jumping in the deep, still pools.



"Coyote and Dog near Anaham Lake"



"Stuie"

RATES

No Extras — Meals Inclusive

Well furnished bedrooms with single beds, double beds and twin beds. We make a special point of giving our guests every possible comfort and charging no extras, so that the total cost of the trip can be closely estimated before leaving home.

Per day, from.....\$ 4.50 per person

Special rate for one week including car

from wharf to Lodge and return... 40.00 " "

Each subsequent week, from..... 28.00 " "

Saddle horses and guides can be obtained at the Lodge at reasonable rates.

There is direct telegraphic communication with the Lodge via Dominion Government Telegraphs, 325 Seymour Street, Vancouver, B. C. Telegraphic address "Stuie B. C."

Reservations can also be made at the Union Steamship Co's offices in Vancouver and Victoria.

Intending visitors are advised to make reservations early.

Further information can be obtained from

STUIE LODGE

Bella Coola, B. C.

Proprietors:

A. J. ARNOLD

T. A. WALKER